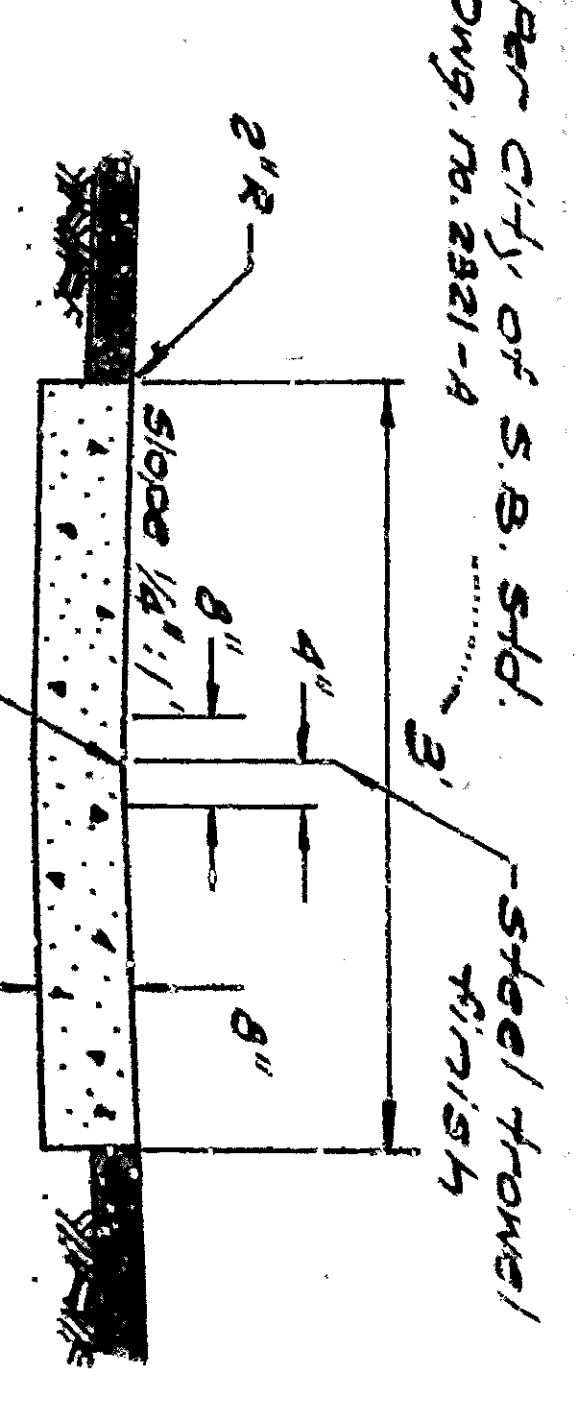
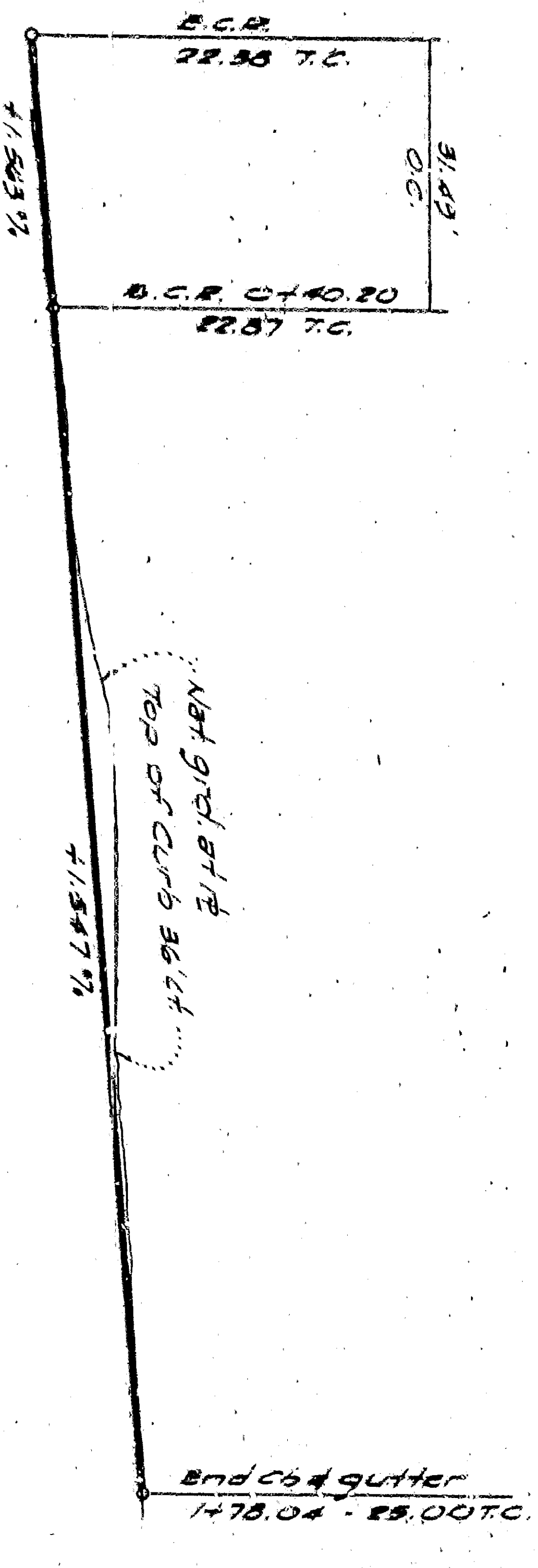
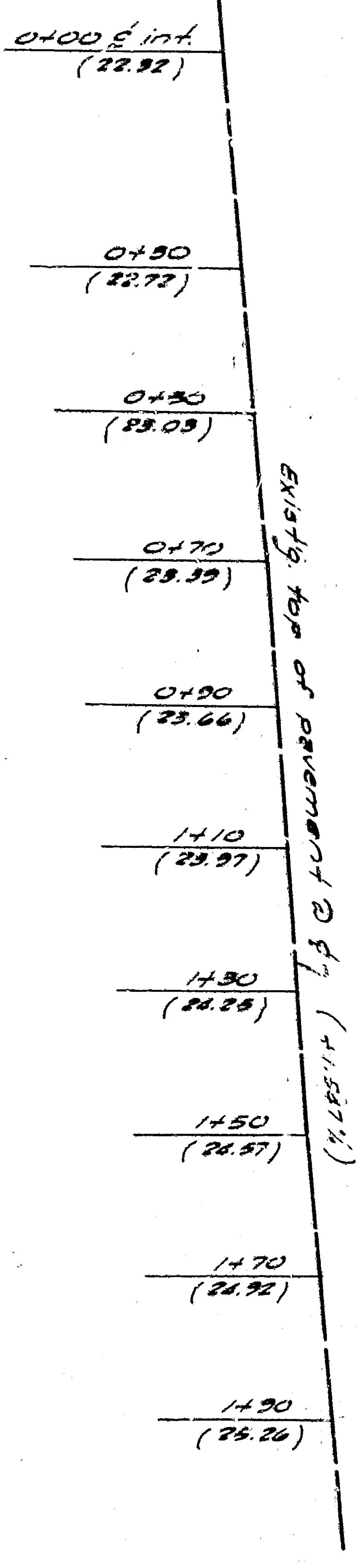
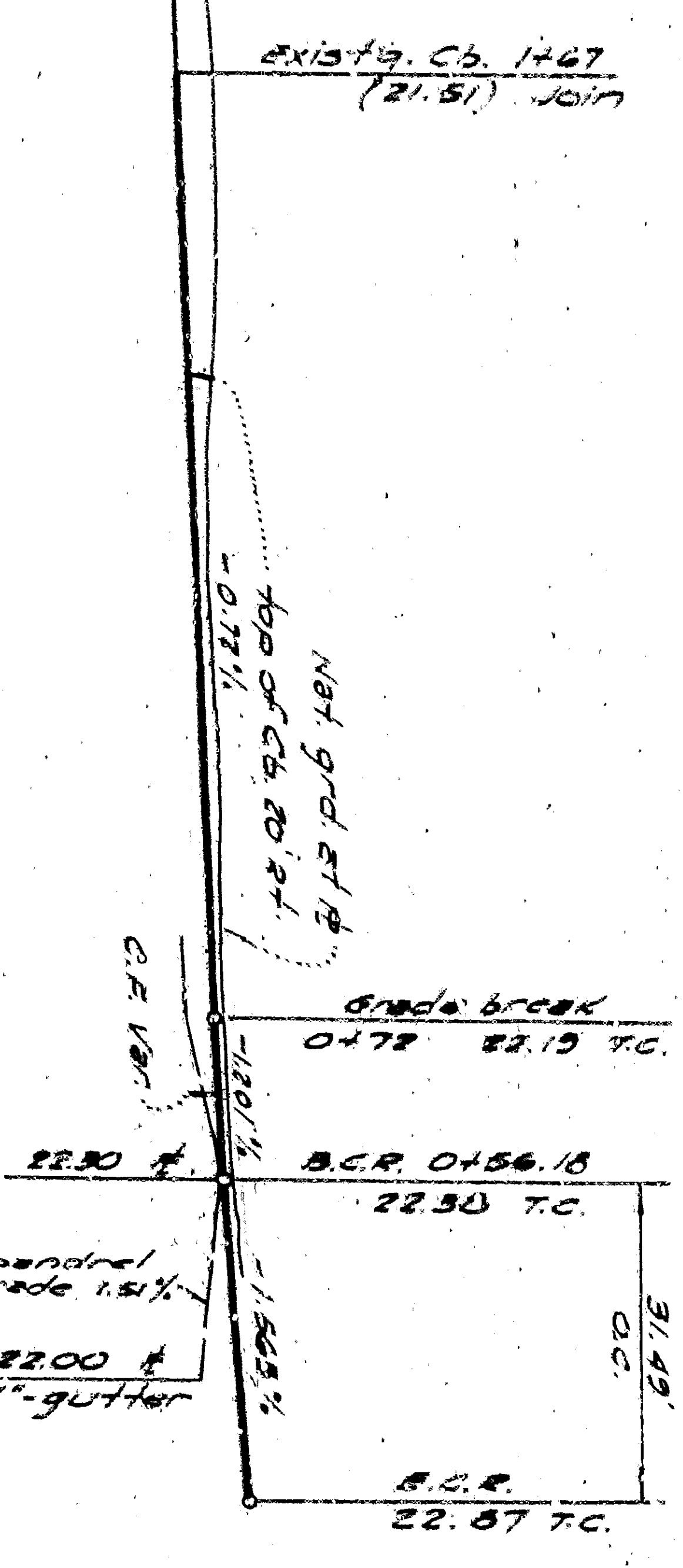
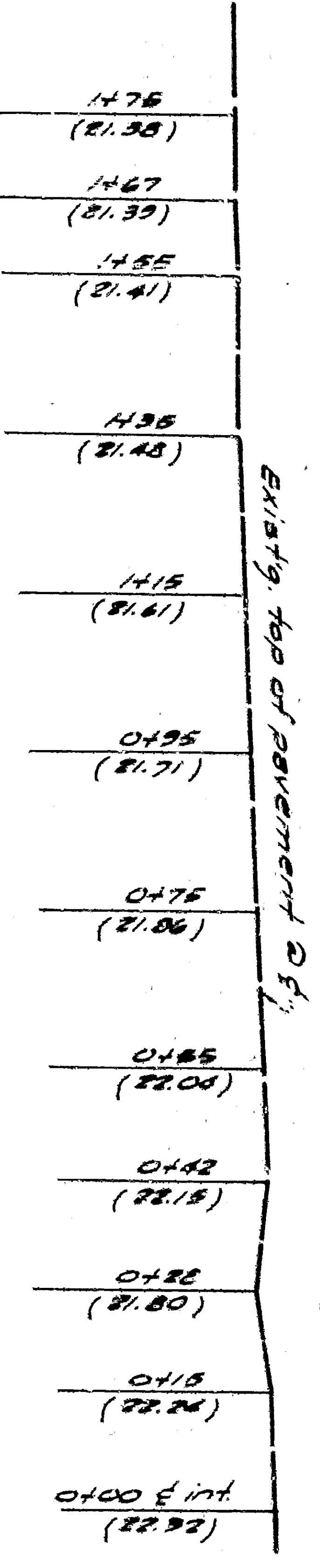


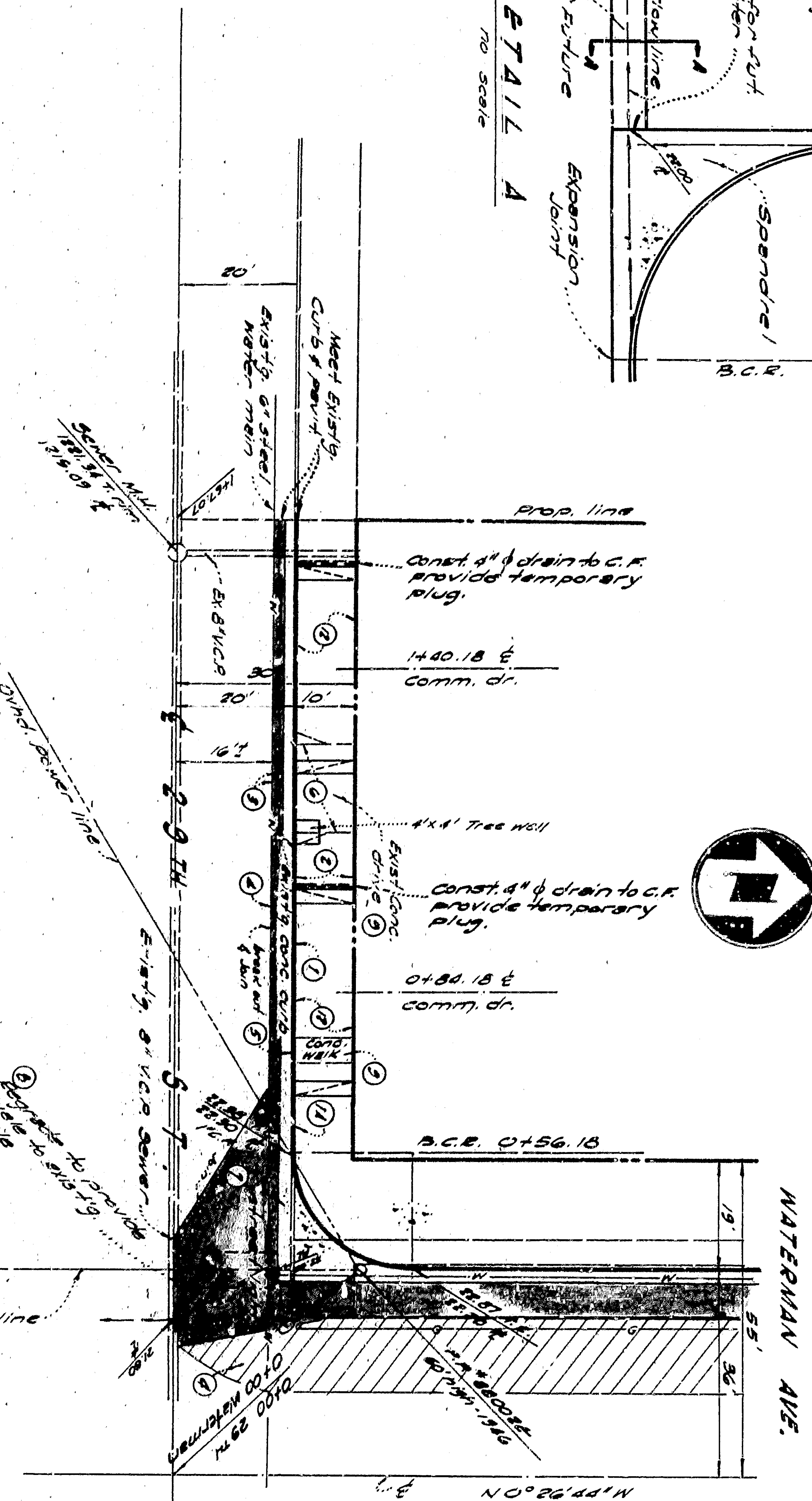
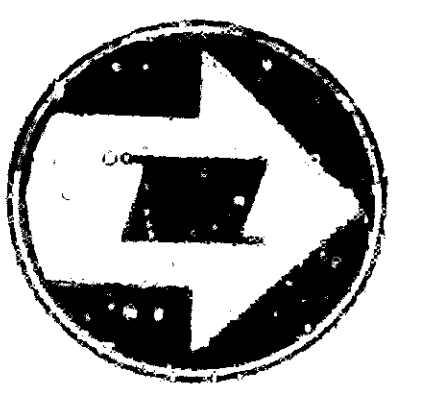
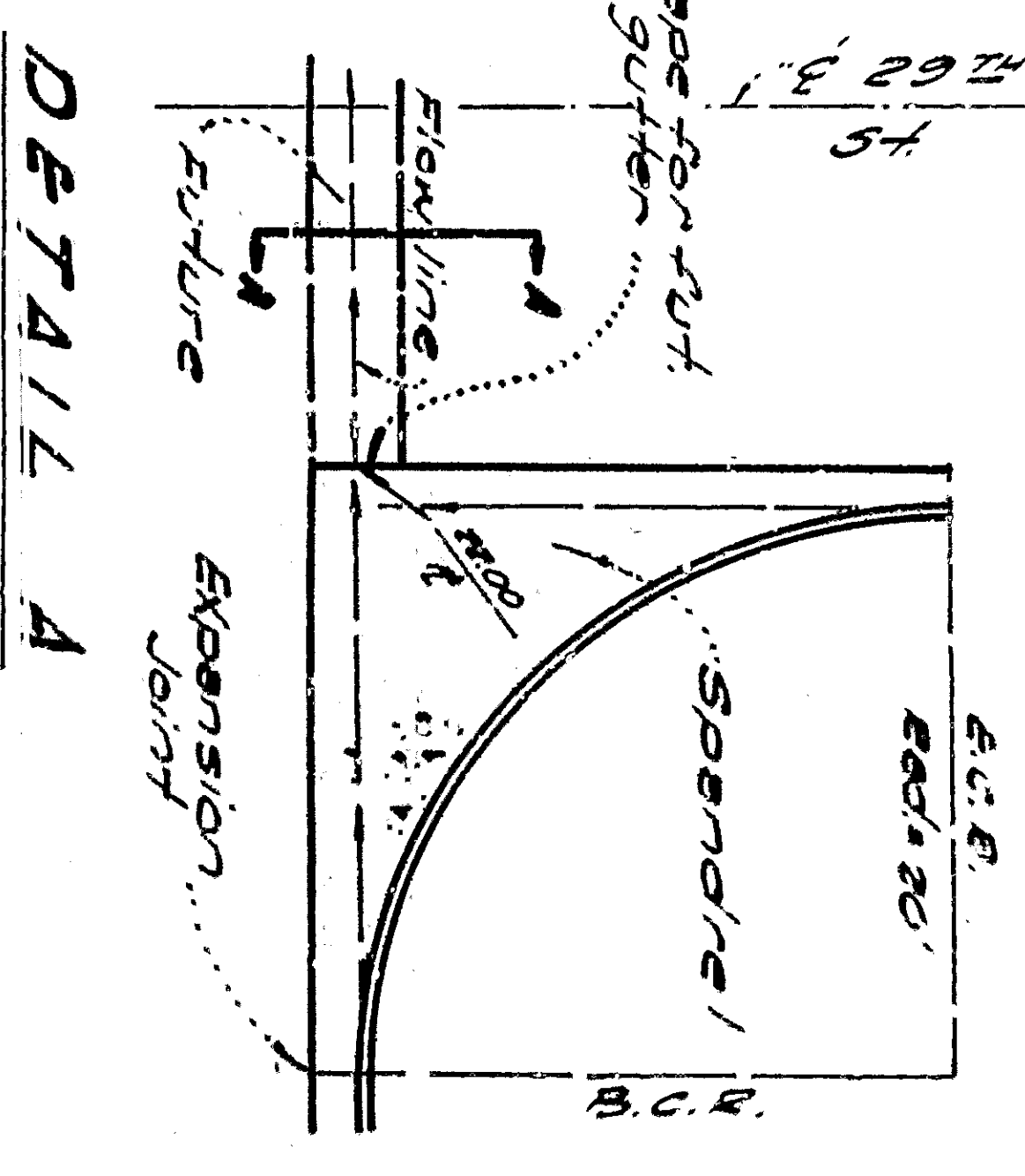
1225

1225

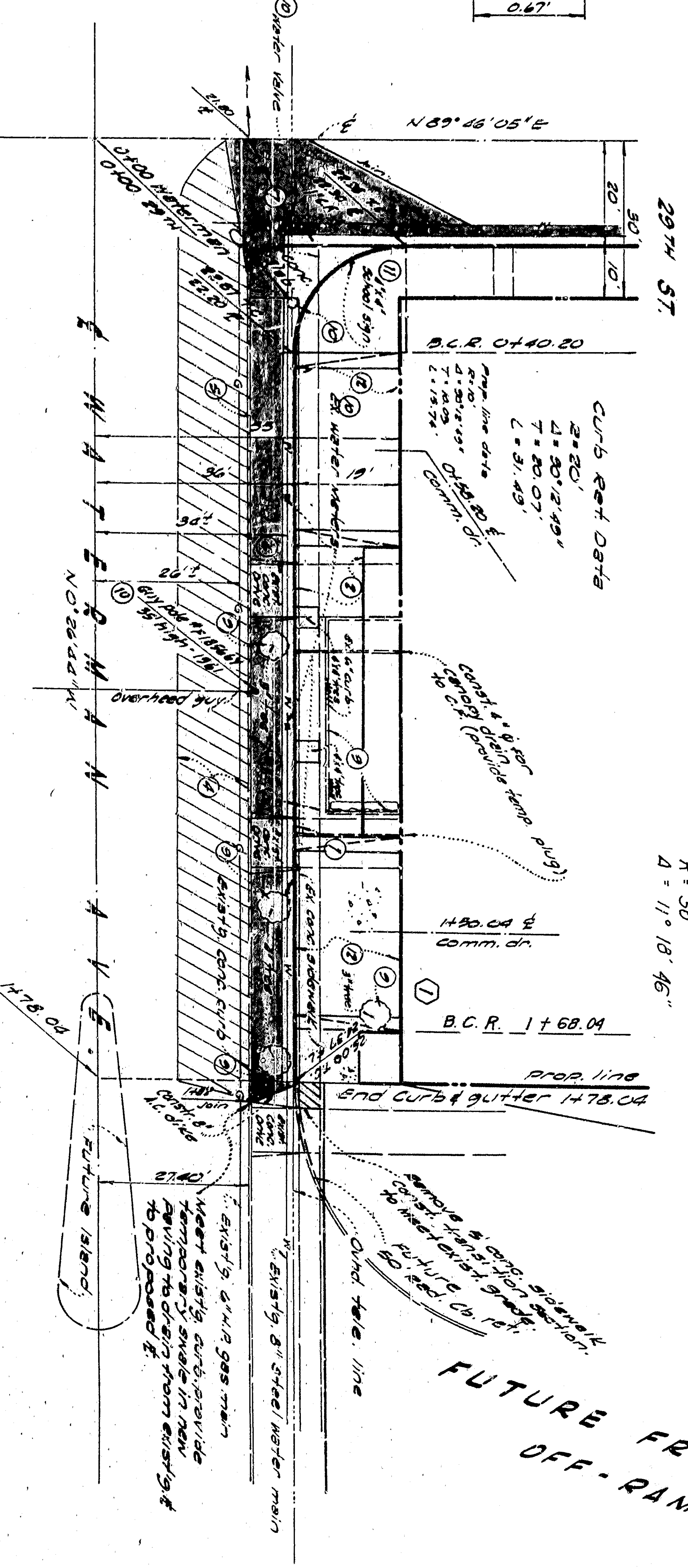
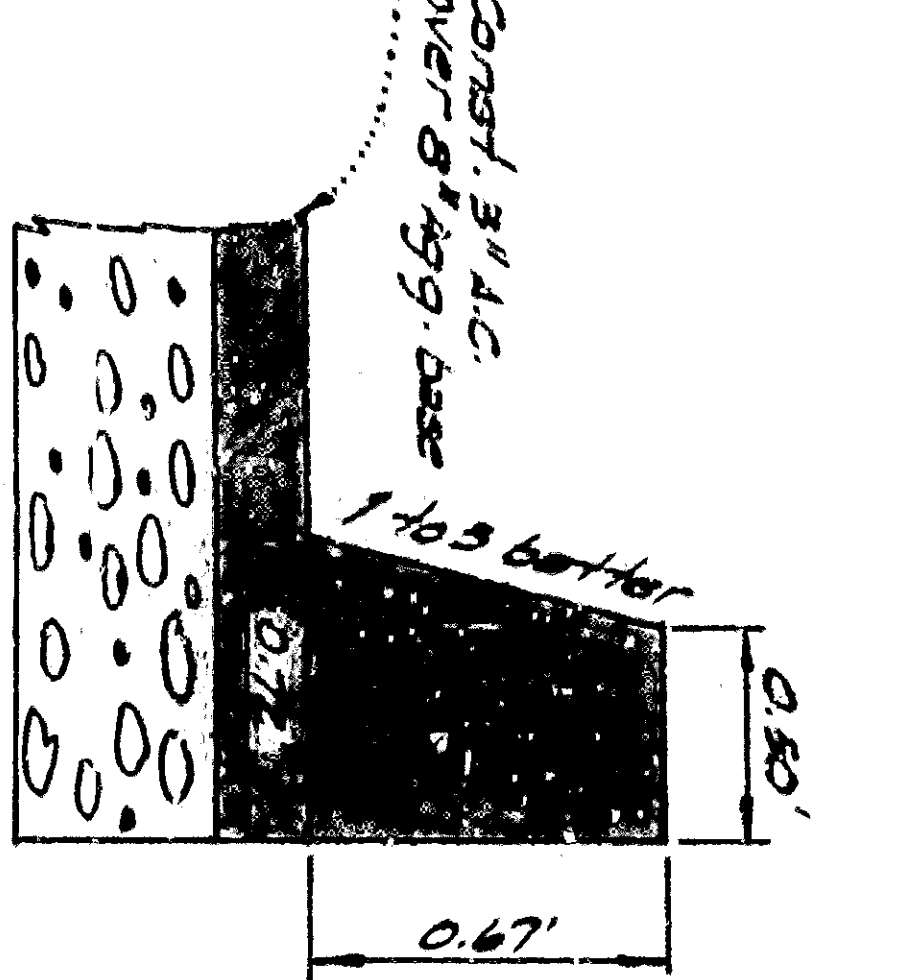
1225



FUTURE GUTTERS SECTION A-A
NO SCALE

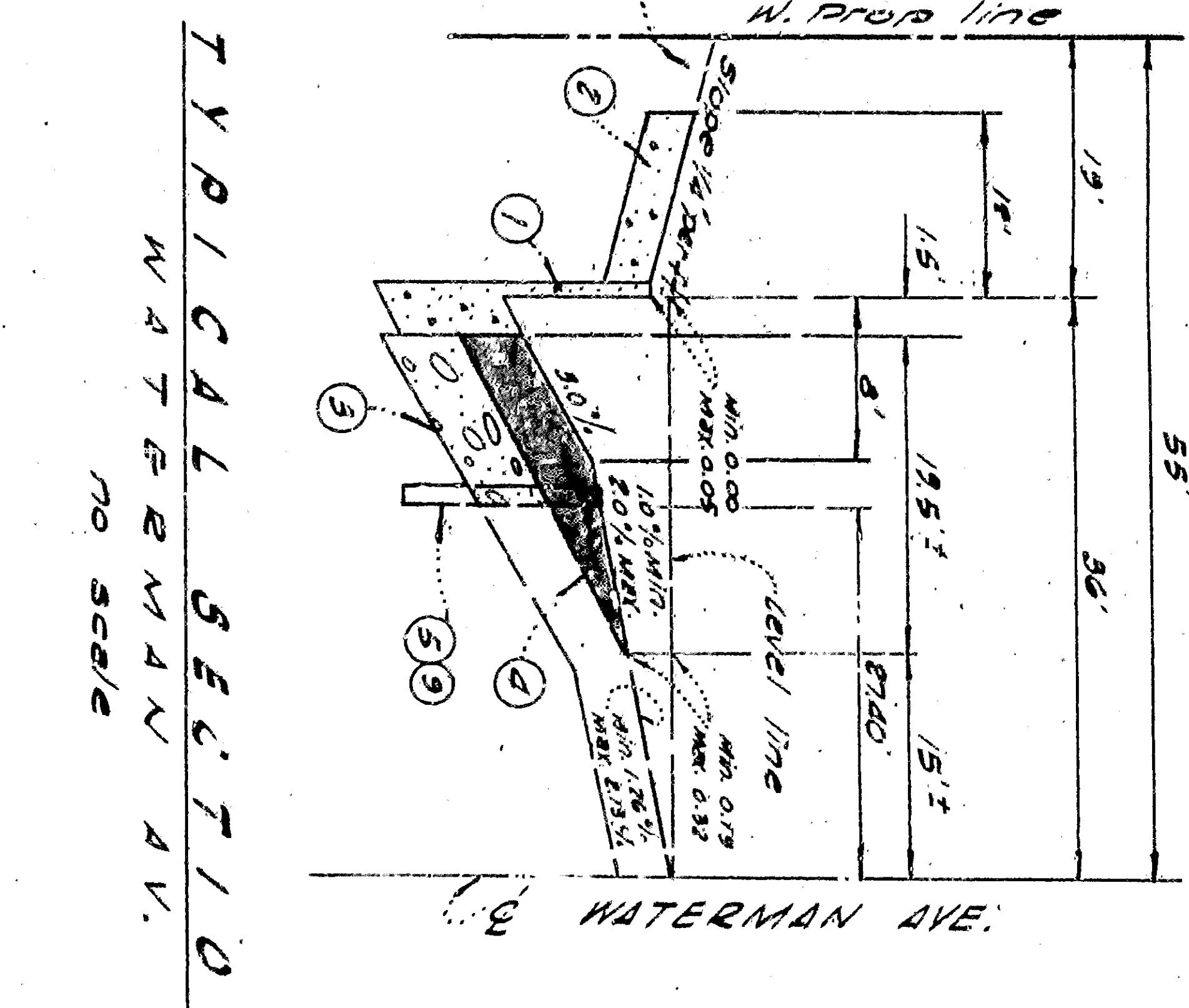
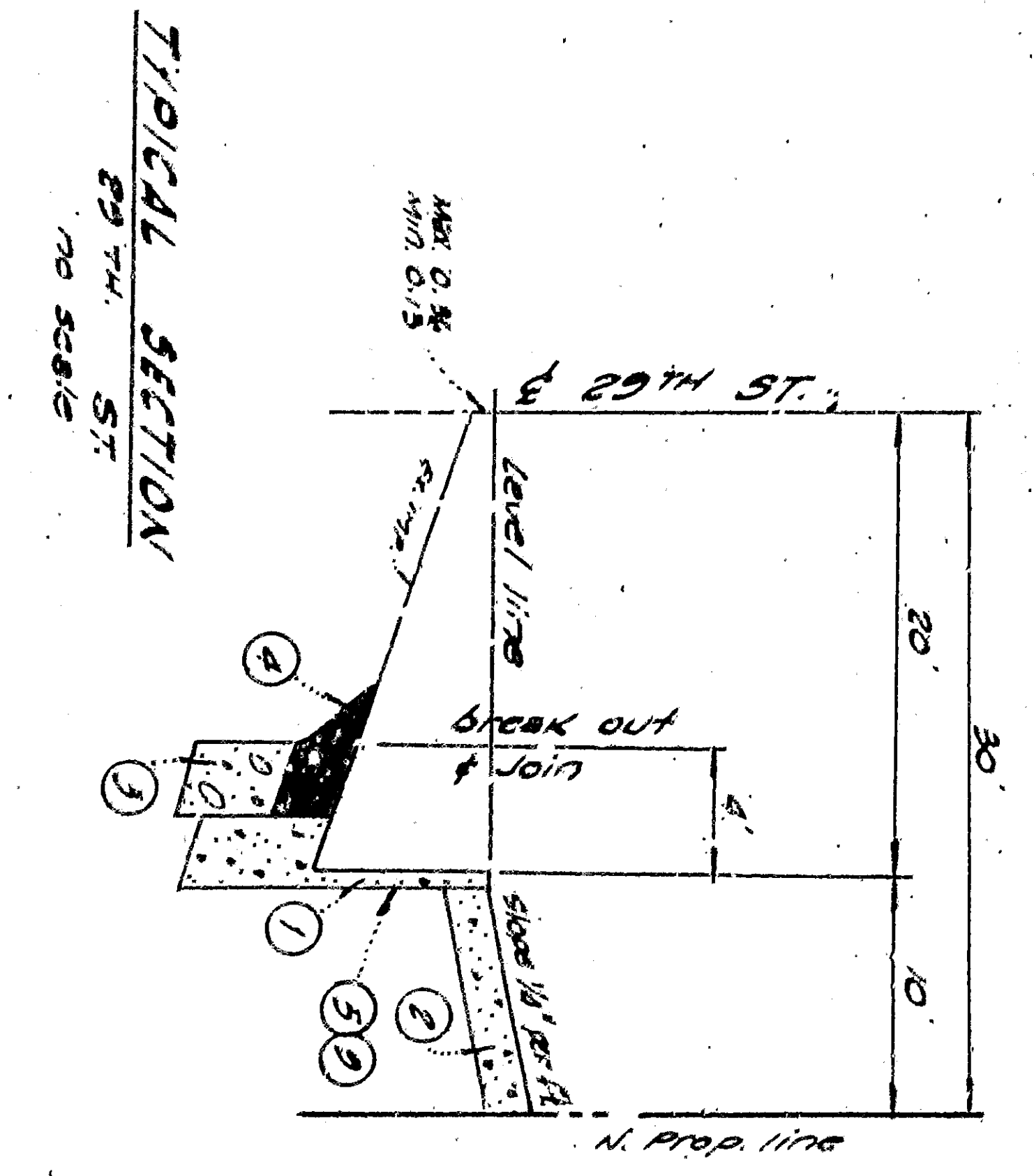


PROFILE
Scales:
Vert: 1" = 5'
Hor: 1" = 20'
PLAN
Scale: 1" = 20'



CONSTRUCTION NOTES

1. Const curb & gutter per city of San Bernardino
2. Const 4" thick concrete curb (1.5% grad)
3. Const 4" thick concrete gutter (1.5% grad)
4. Const 3" thick concrete curb (1.5% grad)
5. Remove existing curb & gutter to produce smooth crown sec.
6. Remove existing sidewalk & driveway
7. Const 4" thick concrete curb (1.5% grad)
8. Remove existing concrete, regrade drainage slope
9. Remove by contractor
10. Remove by contractor
11. Remove by contractor
12. Remove by contractor
13. Remove by contractor
14. Remove by contractor
15. Remove by contractor
16. Remove by contractor
17. Remove by contractor
18. Remove by contractor
19. Remove by contractor
20. Remove by contractor
21. Remove by contractor
22. Remove by contractor
23. Remove by contractor
24. Remove by contractor
25. Remove by contractor
26. Remove by contractor
27. Remove by contractor
28. Remove by contractor
29. Remove by contractor
30. Remove by contractor
31. Remove by contractor
32. Remove by contractor
33. Remove by contractor
34. Remove by contractor
35. Remove by contractor
36. Remove by contractor
37. Remove by contractor
38. Remove by contractor
39. Remove by contractor
40. Remove by contractor
41. Remove by contractor
42. Remove by contractor
43. Remove by contractor
44. Remove by contractor
45. Remove by contractor
46. Remove by contractor
47. Remove by contractor
48. Remove by contractor
49. Remove by contractor
50. Remove by contractor
51. Remove by contractor
52. Remove by contractor
53. Remove by contractor
54. Remove by contractor
55. Remove by contractor
56. Remove by contractor
57. Remove by contractor
58. Remove by contractor
59. Remove by contractor
60. Remove by contractor
61. Remove by contractor
62. Remove by contractor
63. Remove by contractor
64. Remove by contractor
65. Remove by contractor
66. Remove by contractor
67. Remove by contractor
68. Remove by contractor
69. Remove by contractor
70. Remove by contractor
71. Remove by contractor
72. Remove by contractor
73. Remove by contractor
74. Remove by contractor
75. Remove by contractor
76. Remove by contractor
77. Remove by contractor
78. Remove by contractor
79. Remove by contractor
80. Remove by contractor
81. Remove by contractor
82. Remove by contractor
83. Remove by contractor
84. Remove by contractor
85. Remove by contractor
86. Remove by contractor
87. Remove by contractor
88. Remove by contractor
89. Remove by contractor
90. Remove by contractor
91. Remove by contractor
92. Remove by contractor
93. Remove by contractor
94. Remove by contractor
95. Remove by contractor
96. Remove by contractor
97. Remove by contractor
98. Remove by contractor
99. Remove by contractor
100. Remove by contractor



NOTES:

1. All work on this plan shall be done in conformity with applicable provisions of standard specification to 221 (for cut) and standard drawing no. 221 on file in the office of the city engineer.
2. **BENCH MARK:** Division of Highways datum marked at N.E. cor. of 29th St. and Waterman Ave. 20' N. of curb return, Elevation 1231.22.
3. The utility companies shall be notified 30 days prior to beginning operations to allow for 15' minimum 4' separation from this (221.00) datum existing 29th St. 5' 11" from N.W.C. of 29th St. curb (21.22) and Waterman Ave. Elev. 1222.25.

29TH STREET & WATERMAN AVENUE
IMPROVEMENT PLANS
NORTHWEST CORNER

DEPARTMENT OF ENGINEERING
CITY OF SAN BERNARDINO

APPROVED DATE: 7/11/27
DRAWING NO: 3560
SHEET 1 OF 1 SHEETS

CHECKED BY: [Signature]
DRAWN BY: [Signature]
REGISTERED CIVIL ENGINEER NO. 2222